



**MacDermid
Design Ltd**

A FULL SERVICE METAL FABRICATION COMPANY

 www.macdesignltd.com

2650 E. Mohawk Lane, Suite 152, Phoenix, Arizona 85050
Phone: 602-482-7215 Email: info@macdesignltd.com

VEHICLE APPLICATION

<ul style="list-style-type: none">• 2022-2023	<ul style="list-style-type: none">• RZR Pro R• RZR Pro R 4
<ul style="list-style-type: none">• 2020-2022• 2022-2023	<ul style="list-style-type: none">• RZR Pro XP• RZR Pro XP 4• RZR Turbo R• RZR Turbo R 4

HARDWARE INCLUDED

(4) M10-1.5 x 25mm Bolt	(8) M10-1.5 Flange Nut
(4) Two-Piece Billet Fastener System	(4) Tie Down Rings
(2) Keys For Lockable Latches	

TOOL LIST

<ul style="list-style-type: none">• 15mm Socket / Wrench	<ul style="list-style-type: none">• 8mm Hex Key
--	---

INSTALLATION NOTES

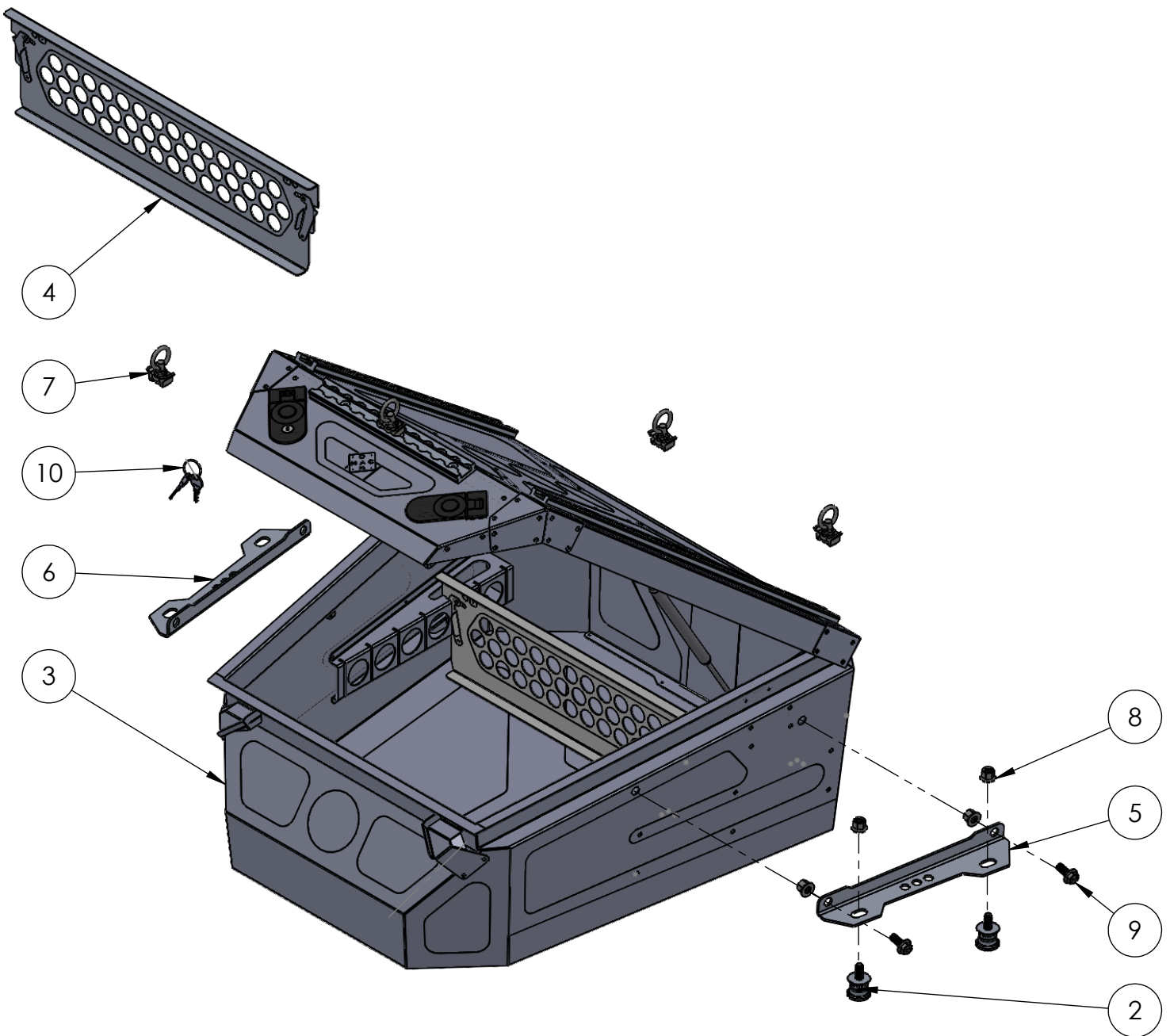
READ ALL INSTRUCTIONS FROM START TO FINISH BEFORE BEGINNING INSTALLATION. FAILURE TO DO SO MAY RESULT IN DAMAGE TO PRODUCT

LID OF STORAGE BOX IS SPRING LOADED FOR AN ADDITIONAL 65LBS. DO NOT OPEN LID UNLOADED WITHOUT APPLYING DOWNWARD FORCE TO TOP TO PREVENT INJURY

*** MACDERMID DESIGN IS NOT RESPONSIBLE FOR ANY DAMAGE OR FAILURE RESULTING FROM IMPROPER INSTALLATION***

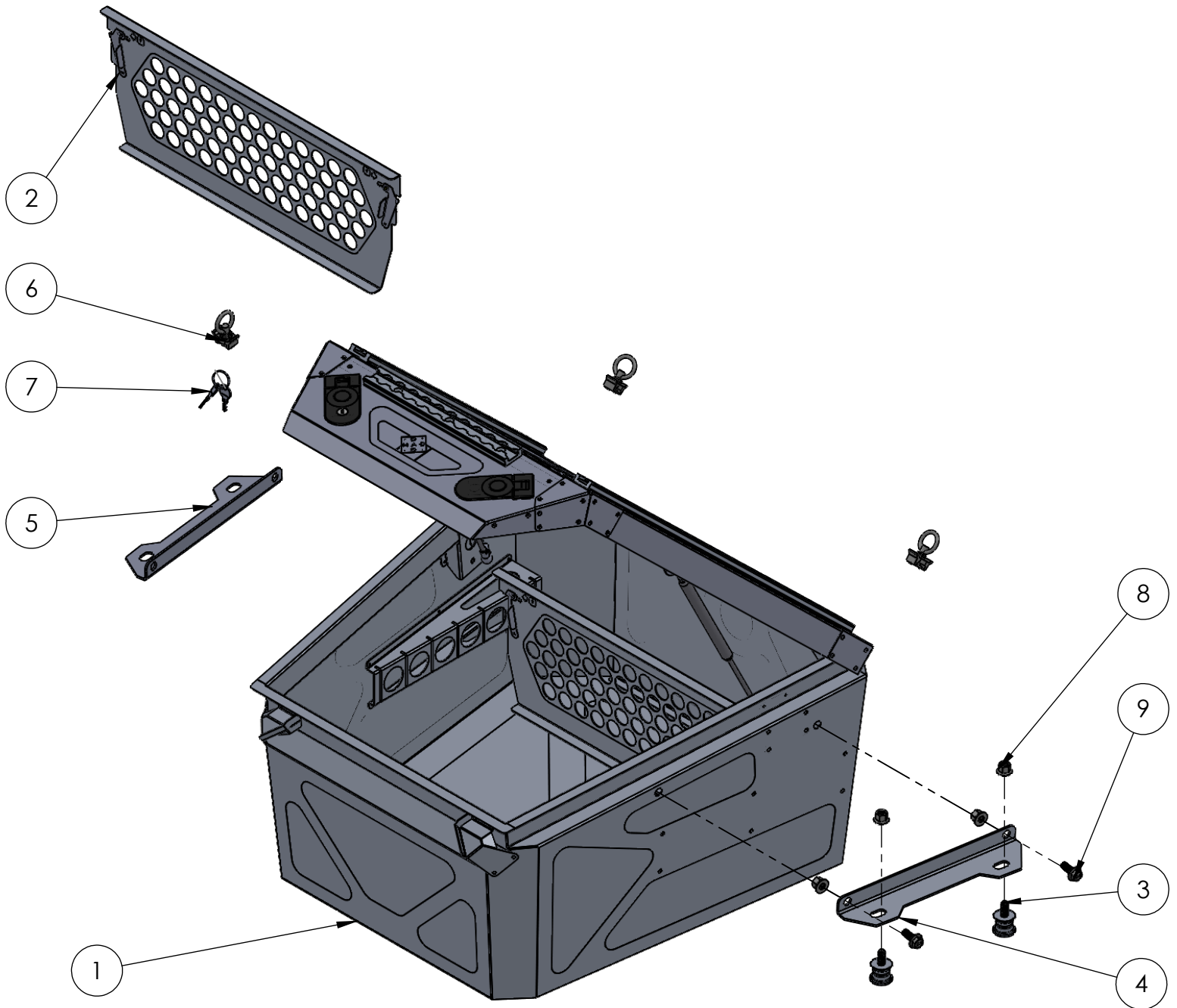
RZR PRO R STORAGE BOX

ITEM NO.	PART NUMBER	DESCRIPTION	QTY.
2	230-LRF-R2	L&R BILLET FASTENER	4
3	230-STSB-R1	PRO R - SPARE TIRE/STORAGE BOX	1
4	230-STSB-R1 DIVIDER	STORAGE DIVIDER PANEL	2
5	230-STSB-R1-10	MOUNT BRKT, PASSENGER SIDE	1
6	230-STSB-R1-10M	MOUNT BRKT, DRIVER SIDE	1
7	39695T51	Tie-Down Ring for Quick-Adjust Load-Securing Track	4
8	92461A500	M10-1.5 FLANGE NUT	8
9	98093A619	M10-1.5 x 25mm BOLT	4
10	CH751 KEY	Set of 2 KEYS	1



RZR PRO XP / TURBO R STORAGE BOX

ITEM NO.	PART NUMBER	DESCRIPTION	QTY.
1	220-STSB-R1	PRO XP / PRO TURBO SPARE TIRE/STORAGE BOX	1
2	220-STSB-R1 DIVIDER	220-STSB-R1 DIVIDER	2
3	230-LRF-R2	L&R BILLET FASTENER	4
4	220-STSB-R1-10	MOUNT BRKT, PASSENGER SIDE	1
5	220-STSB-R1-10M	MOUNT BRKT, DRIVER SIDE	1
6	39695T51	Tie-Down Ring for Quick-Adjust Load-Securing Track	4
7	CH751 KEY	Set of 2 KEYS	1
8	92461A500	M10-1.5 FLANGE NUT	8
9	98093A619	M10-1.5 x 25mm BOLT	4



DISCLAIMER

This product is warranted against manufacturer defects only. Any claim against a defect must be made within 7 days of receipt. Please visit our website www.macdesignltd.com/return-policy for more information.

INSTALLATION

1. Clean rear bed tray area before install.
2. Install the two piece fastener system into the four plug locations. The pre assembled large bottom piece and threaded stud should be inserted into the bottom of the plug and the thinner cap piece will be fastened from the top side.

Use the long end of an 8mm hex key from the bottom side to tighten the fastener system together being cautious to not over torque the assembly. If the top cap is spinning while tightening, apply downward pressure on the top cap to provide enough friction to tighten.



3. Fit the Storage Box into the bed pan by lifting from the front of the lid and the back lip where the hinge is attached. Guide the box in from the front of the box first and firmly press down to ensure the box is seated into the bed pan.
4. Place your mounting brackets on either side of the box ensuring proper orientation of the passenger and driver side versions with the slotted holes on the bed side and the straight hole on the box side.



5. Using an 8mm Hex key to hold the position on the bottom side of the fastener system and a 15mm socket on the top nut, tighten the bracket down so it still has some adjustability.

6. Then fully tighten the bolts connecting the bracket to the box with a 15mm socket and wrench accessed by opening the lid of the box.

***** BE CAUTIOUS WHILE OPENING THE LID WITHOUT ADDED WEIGHT*****
BOX IS WEIGHTED FOR A SPARE TIRE AND WILL OPEN SUDDENLY WITHOUT THIS WEIGHT



7. Finish the install by completely tightening the mounting bracket to the bed pan, again using the 15mm socket and the 8mm kex key.
8. Go out and enjoy your new storage solution!