



**MacDermid
Design Ltd**

A FULL SERVICE METAL FABRICATION COMPANY

 www.macdesignltd.com

2650 E. Mohawk Lane, Suite 152, Phoenix, Arizona 85050
Phone: 602-482-7215 Email: info@macdesignltd.com

VEHICLE APPLICATION

<ul style="list-style-type: none">• 2022-2025	<ul style="list-style-type: none">• RZR Pro R• RZR Pro R 4
---	---

HARDWARE INCLUDED

(4) Billet Fastener System	(4) Tie Down Rings
(2) Keys For Lockable Latches	(4) M10-1.5 Flange Nut

TOOL LIST

<ul style="list-style-type: none">• 15mm Socket / Wrench	<ul style="list-style-type: none">• 8mm Hex Key
<ul style="list-style-type: none">• T-40 Torx Driver	<ul style="list-style-type: none">• Body Clip Removal Tool/Flathead Screwdriver

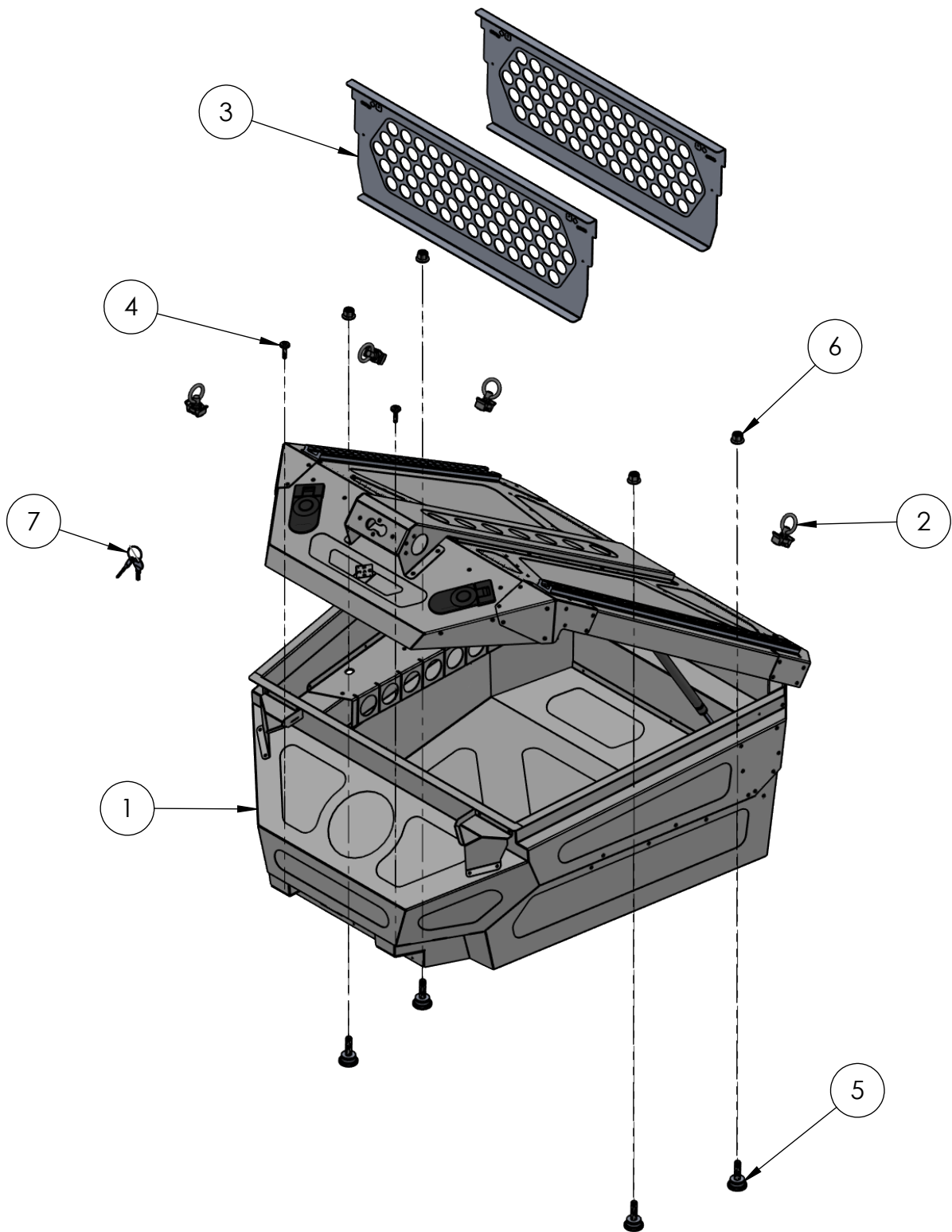
INSTALLATION NOTES

READ ALL INSTRUCTIONS FROM START TO FINISH BEFORE BEGINNING INSTALLATION. FAILURE TO DO SO MAY RESULT IN DAMAGE TO PRODUCT

LID OF STORAGE BOX IS SPRING LOADED FOR AN ADDITIONAL 75LBS. DO NOT OPEN LID UNLOADED WITHOUT APPLYING DOWNWARD FORCE TO TOP TO PREVENT INJURY

*** MACDERMID DESIGN IS NOT RESPONSIBLE FOR ANY DAMAGE OR FAILURE RESULTING FROM IMPROPER INSTALLATION***

ITEM NO.	PART NUMBER	DESCRIPTION	QTY.
1	230-STSB-35-R2	PRO R - SPARE TIRE/STORAGE BOX	1
2	39695T51	TIE DOWN RING	4
3	220-STSB-35-R2-DIVIDER	DIVIDER PANEL	2
4	M6x1,25mm	FACTORY SCREW, RE-USE	2
5	230-LRF-R2	LOCK & RIDE, STUD/BOLT	4
6	92461A500	10M Nylon-Insert Flange Locknut	4
7	CH751 KEY	Set of 2 KEYS	1



DISCLAIMER

This product is warrantied against manufacturer defects only. Any claim against a defect must be made within 7 days of receipt. Please visit our website www.macdesignltd.com/return-policy for more information.

INSTALLATION

1. Clean rear bed tray area before install. For proper tire clearances be sure that any cage mounted accessories at the rear of the car are not impeding the bed space. The factory roll cage typically has two welded on brackets that may be an issue but the majority of aftermarket cages work without any problems.
2. Remove the inside vent covers with a body tool or flathead by prying upward on the center pin of the body clips holding them to the side intake vents. (Figure 1) Now is the best time to install the Pro R Vent Covers (Optional, Purchased Separately) If you wish to retain stock covers see Figure 2 below for cut instructions.



FIGURE 1



FIGURE 2

3. Remove the two bolts from the front of the bed using the T-40 Torx Driver and set them aside for reuse later.(Figure 3)

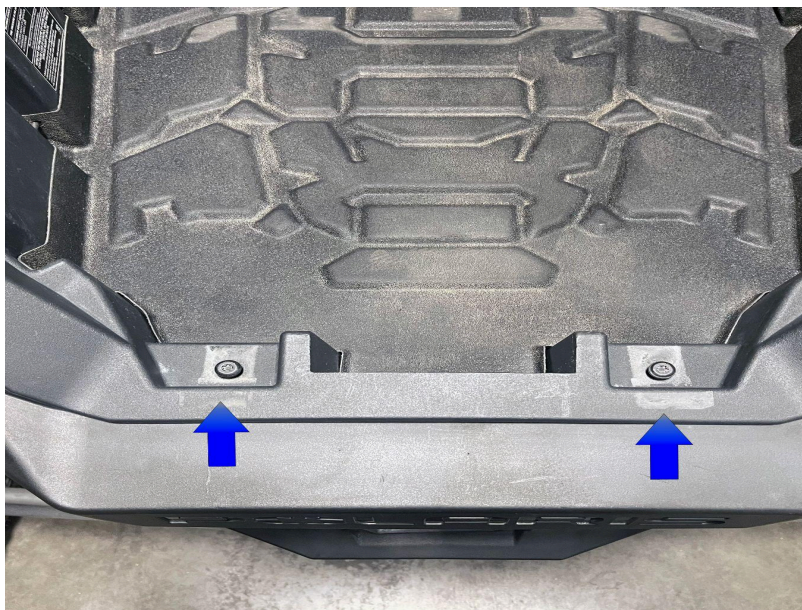


FIGURE 3

4. Place your box inside the bed.
5. Using the provided hardware, push the billet fastener up through the bottom of the lock and ride holes as shown. The flange nut will capture that hardware inside the box as shown through all 4 holes. Leave the hardware loose for adjustment of step 6 (Figure 4 & 5)



FIGURE 4

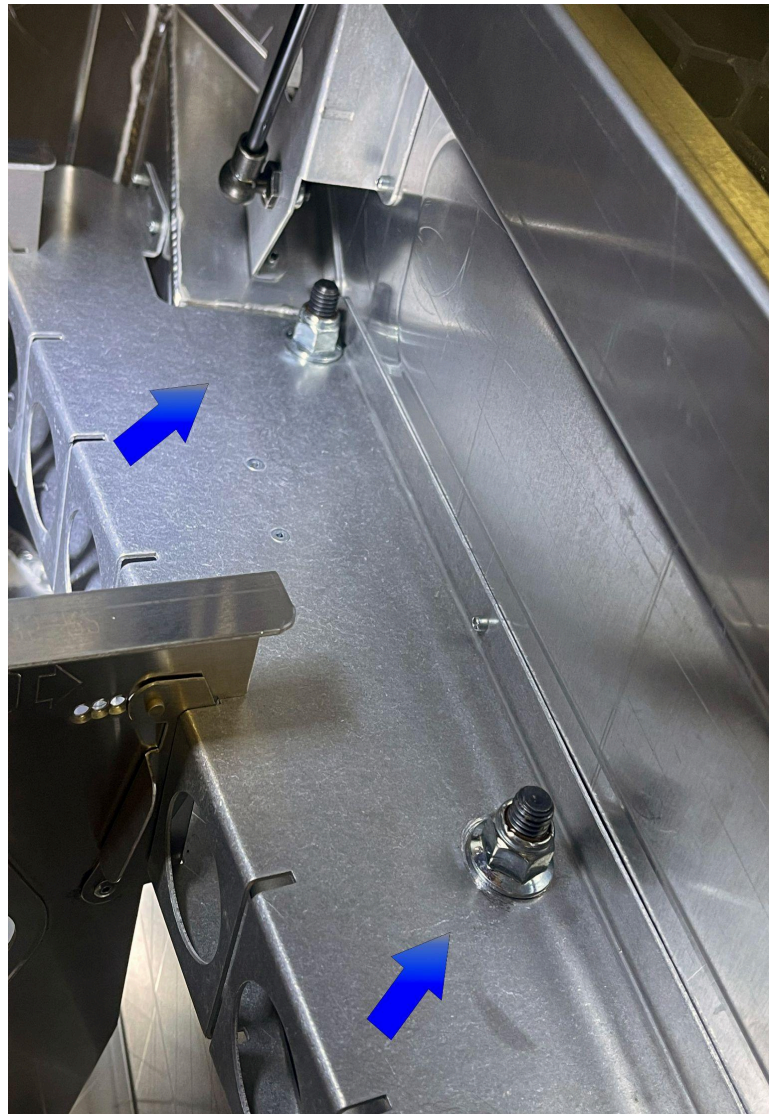


FIGURE 5

6. Reinstall the two T-40 Torx bolts you removed in Step 3 inside the front of the box. (Figure 6)

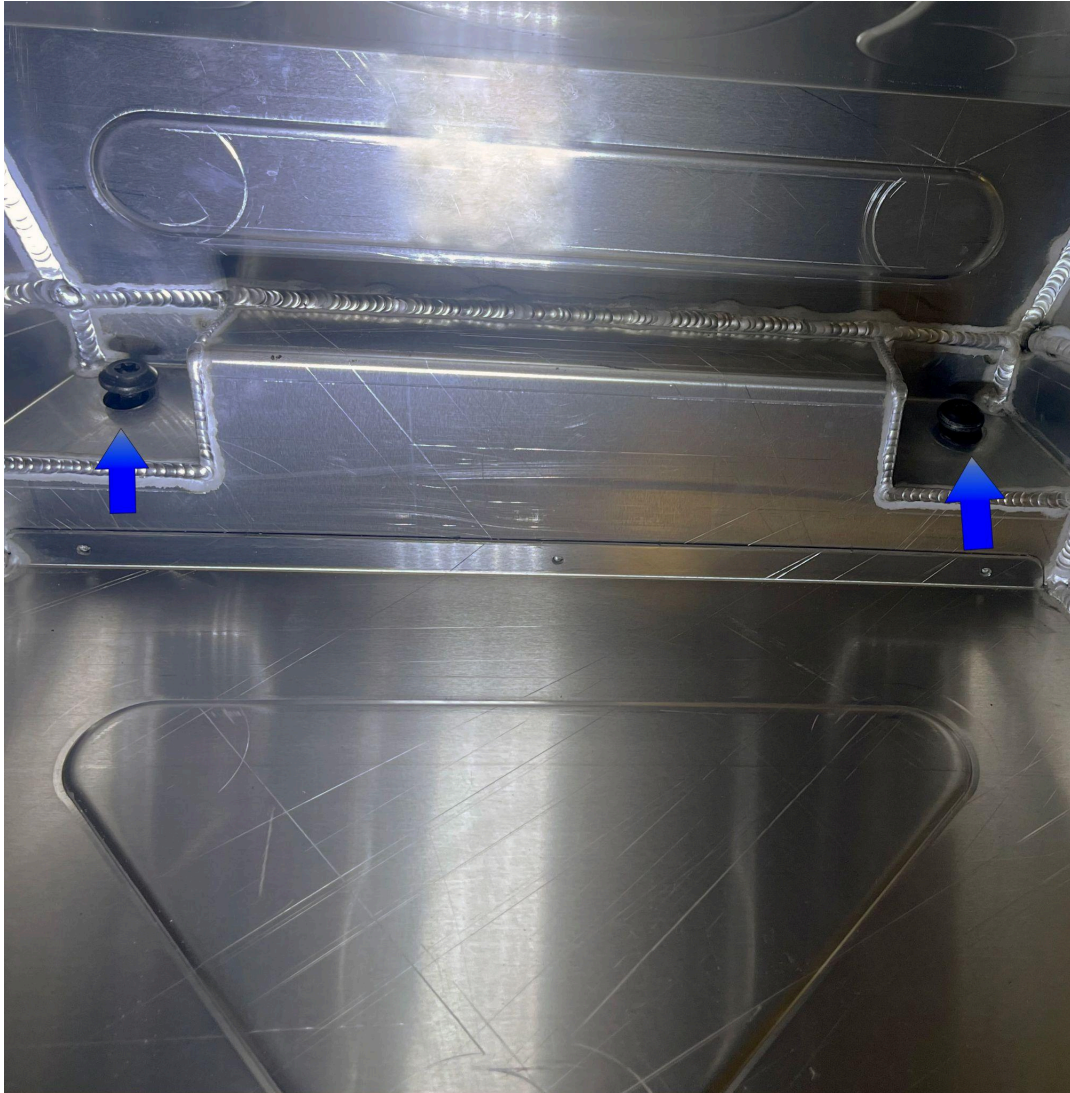


FIGURE 6

7. Tighten all your hardware
8. Go and enjoy your all new storage box, tire carrier!

FOR SERVICING

1. Empty out the storage box and remove your tire from the top of the box.
2. Remove the two T-40 Torx bolts from inside the front of the box (see Figure 5)
3. Remove the two T-40 Torx bolts on the corners of the bed pan (reference Install Guide Figure 7 & 8)



FIGURE 7



FIGURE 8

4. You can now lift the entire bed pan with the box attached out of the car. (Figure 9)



FIGURE 9